

TOTAL Sketch by a la mode, inc.

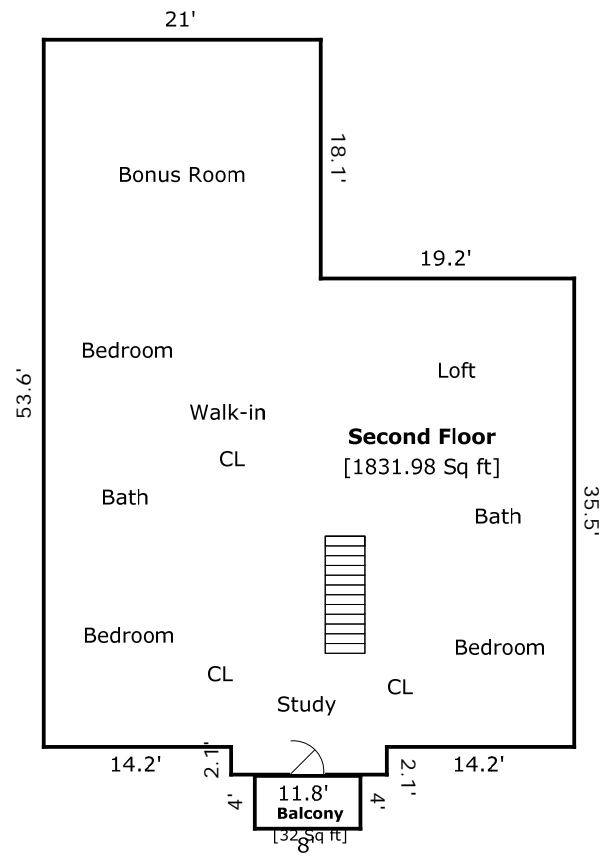
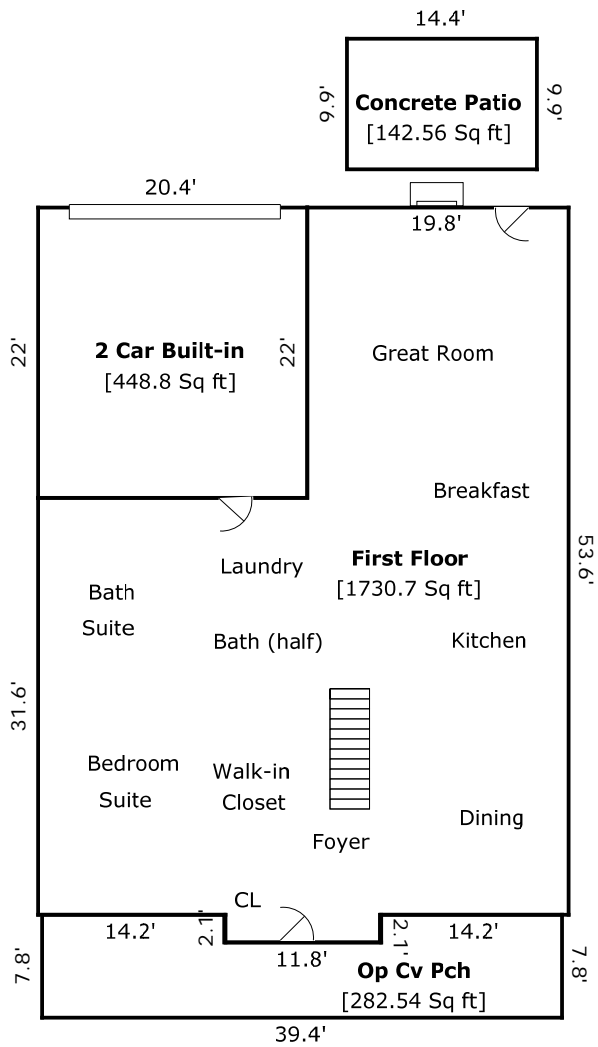
Area Calculations Summary

Living Area

First Floor	1531.5 Sq ft
Open to Below	-117.6 Sq ft
Second Floor	1909.3 Sq ft
Total Living Area (Rounded):	3323 Sq ft

Non-living Area

2 Car Built-in	508.1 Sq ft
Op Cv Pch	43.2 Sq ft



TOTAL Sketch by a la mode, inc.

Area Calculations Summary

Living Area	
First Floor	1730.7 Sq ft
Second Floor	1832 Sq ft
Total Living Area (Rounded):	3563 Sq ft
Non-living Area	
Op Cv Pch	282.5 Sq ft
Balcony	32 Sq ft
2 Car Built-in	448.8 Sq ft
Concrete Patio	142.6 Sq ft